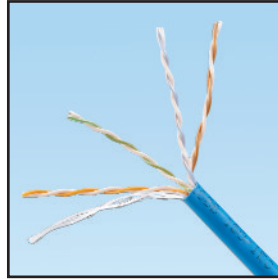


NEW! NETKEY™ Category 5e UTP Copper Cable



specifications

The Category 5e UTP Copper cable meets ANSI/TIA/EIA-568-B.2 and IEC 61156-5 Category 5e component standards. The conductors are 24 AWG copper insulated with HDPE polymer. The copper conductors are twisted in pairs, separated by a cross divider and covered by a low smoke zero halogen or flame retardent PVC jacket.



technical information

Electrical performance:	Certified performance in a 4-connector configuration up to 100m, meets ANSI/TIA/EIA-568-B.2, ISO 11801 2nd Edition Class D and IEC 61156-5 Category 5e channel and component requirements.
Conductor/insulator:	24 AWG solid copper insulated with HDPE polymer
Flame rating:	LSZH - IEC 60332-1, 60754-2, 61034 PVC (CM) - UL 1685
Installation tension:	110N (25 ibf) maximum
Temperature rating:	0° to 50°C during installation -20° to 60°C during operation
Cable jacket:	LSZH - Low Smoke Zero Halogen PVC (CM) - Polyvinyl Chloride
Cable diameter:	LSZH 5.0mm nominal PVC (CM) 4.8mm nominal
Cable Weight:	LSZH - 9kg / 305m PVC (CM) - 8kg / 305m
Packaging:	305m easy-pay-out box, tested to ISTA procedure 1A LSZH - 11kg / 305m PVC - 10kg / 305m

key features and benefits

Third party tested:	Cable has been tested as part of the NETKEY™ Category 5e UTP Copper Cabling System by an independent laboratory and complies with the electrical channel requirements of the ANSI/TIA.EIA-568-B.2 Category 5e standard.
Descending length cable markings:	Easy identification of remaining cable reduces installation time and cable scrap
Easy payout box:	Ensures proper performance and provides quick installation

applications

- Applications include:
- Ethernet 10BASE-T, 100BASE-T (Fast Ethernet), 1000BASE-T (Gigabit Ethernet)
 - 155 Mb/s ATM, 622 Mb/s ATM, 1.2 Gb/s ATM
 - Token Ring 4/16

www.panduit.com

NETKEY™ Network Components

NETKEY™ UTP Copper Cable

LSZH:	NUL5C04BU-CE
PVC:	NUC5C04BU-CE

NETKEY™ Category 5e UTP Jack Module

Punchdown Leadframe	NKP5E88MIW** NK5E88MIWY**
----------------------------	------------------------------

NETKEY™ Category 5e UTP Patch Cords PVC

Metre Lengths:	NK5EPC1M^^ NK5EPC2M^^ NK5EPC3M^^ NK5EPC4M^^ NK5EPC5M^^
-----------------------	--

NETKEY™ Category 5e Punchdown Panels

12 port:	NK5EPPG12WY
24 port, 1 RU:	NK5EPPG24Y
48 port, 2 RU:	NK5EPPG48Y

NETKEY™ flush mount modular patch panels

Angled 24 port, 1RU:	NKPPA24FMY
Angled 48 port, 2RU	NKPPA48FMY
Flat 24 port, 1 RU:	NKPP24FMY
Flat 48 port, 2 RU:	NKPP48FMY

Termination and Cable Prep Tools

JackRapid™ termination tool:	JR-PAN-2
Panel punchdown tool:	PDT110
Wire snipping tool:	CWST
Wire stripping tool:	CJAST

For NETKEY™ cables, European pallets are configured in 4 layers, 6 cartons per layer, 24 cartons per pallet.

**For standard colours other than Off White (IW), replace suffix with EI (Electric Ivory), IG (Int'l Gray), WH (White), BL (Black), RD (Red), BU (Blue), GR (Green), YL (Yellow), or VL (Violet). Add -Q to end of part number for 25 pack convenience package.

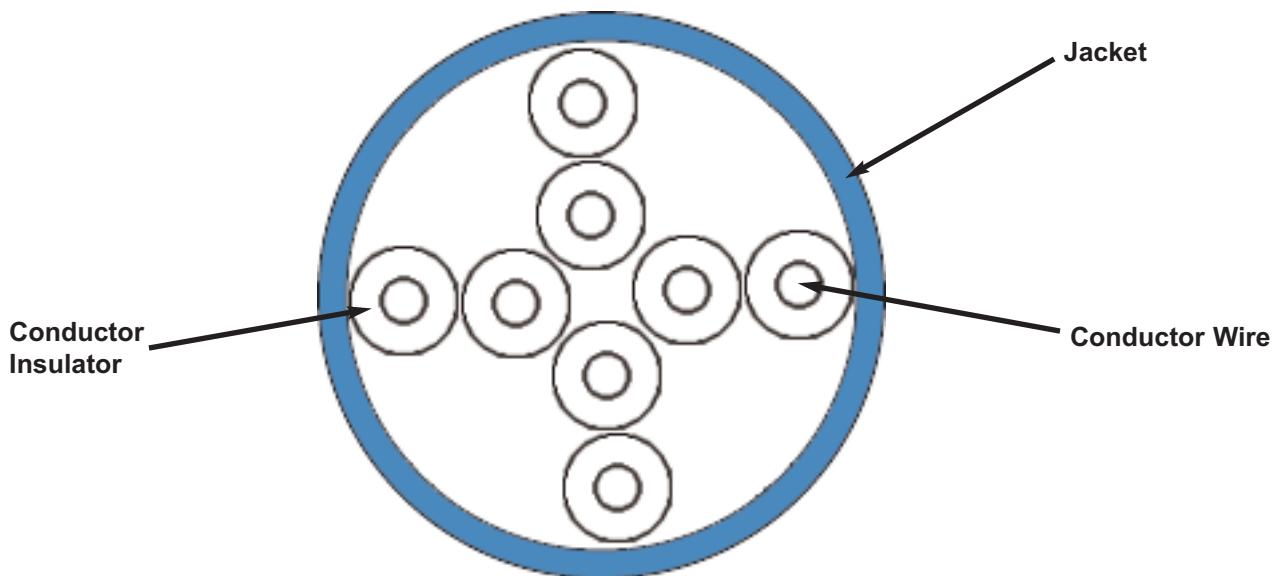
^^For standard cable colours other than Off White, add suffix BU (Blue), GR (Green), RD (Red), or YL (Yellow), to the end of the part number. For example, the part number for a blue Category 5E, 5 metre patch cords is NK5EPC5MBUY

Fluke JackRapid™ Termination tool available through distribution. To locate a local office, visit www.flukenetworks.com/contact. JackRapid™ is a trademark of Fluke Networks

Additional Specifications

Mechanical Test	
Ultimate Breaking Strength	>400 N
Minimum Bend Radius	4 x cable diameter
Electrical Test	
DC Resistance	<9.38 Ohm per 100m
DC Resistance Unbalance	<5%
Mutual Capacitance	<5.6nF per 100m
Capacitance Unbalance	<330pF per 100m
Characteristic Impedance	100 Ohm +/- 15% up to 100MHz
Nominal Velocity of Propagation (NVP)	65%

Cable Construction



WORLDWIDE SUBSIDIARIES AND SALES OFFICES

PANDUIT CANADA
Markham, Ontario
cs-cdn@panduit.com
Phone: 800.777.3300

PANDUIT EUROPE LTD.
London, UK
cs-emea@panduit.com
Phone: 44.20.8601.7200

PANDUIT SINGAPORE PTE. LTD.
Republic of Singapore
cs-ap@panduit.com
Phone: 65.6379.6700

PANDUIT JAPAN
Tokyo, Japan
cs-japan@panduit.com
Phone: 81.3.3767.7011

PANDUIT LATIN AMERICA
Jalisco, Mexico
cs-la@panduit.com
Phone: 52.333.666.2501

PANDUIT AUSTRALIA PTY. LTD.
Victoria, Australia
cs-aus@panduit.com
Phone: 61.3.9794.9020

For a copy of *PANDUIT* product warranties, log on to www.panduit.com/warranty



For more information
Visit us at www.panduit.com
Contact us by email: cs-emea@panduit.com
or by phone: +44 (0) 20 8601 7219

©2009 *PANDUIT* Corp.
ALL RIGHTS RESERVED.
WW-NKDS12-GB
5/2009